

Peran STB



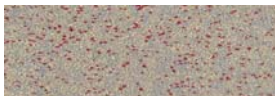
Standard colour chart



Cream 7700



Granite Grey 7600



Grey 7120



Grey 7770



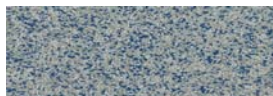
Red 7510



Yellow 7400



Grey 7100



Blue 7200

The applied colours will differ slightly from the examples shown above, due to printing variations. Contact our customer services for a true colour sample or a special colour match.

Description

Peran STB is a hard-wearing, decorative resin floor topping made up of colour stable quartz granules encapsulated in a clear resin binder. Peran STB is available with a matt or gloss finish.

Uses

Ideal for use in kitchens and wet and dry process areas where the floor is subject to heavy traffic, impact and chemical spills.

Benefits

- Decorative floor finish.
- High scratch resistance.
- Easy to clean and maintain.
- Excellent wear and impact resistance.
- Seamless, hygienic finish.
- Abrasion resistant.
- Rapid installation.
- High chemical resistance.

Project References

Fruit & Veg City, Spar, City Deep Meats, Nestle, Anglo Plats Canteen

Model Specification

Product: Peran STB
 Finish: Gloss or matt
 Thickness: Compact 2-4 mm
 Colour: Various

Preparatory work and application in accordance with supplier's instructions.

Substrate Requirements

Concrete or screed substrate should be a minimum of 25N/mm², free from laitance, dust and other contamination. The substrate should be dry to 75% RH as per BS 8204 and free from rising damp and ground water pressure. If no damp proof membrane is present Hydraseal DPM can be incorporated directly beneath the Peran STB system.

Installation Service

The installation should be carried out by a Flowcrete approved contractor with a documented quality assurance scheme. Obtain details of our approved contractors by contacting our customer service team or enquiring via our web site www.flowcrete.com.

Focus on the Floor-zone

Flowcrete Group plc are world leaders in specialist industrial and commercial flooring. Systems available include: underfloor heating systems, floor screeds, surface damp proof membranes, decorative floor finishes, seamless terrazzo, car park deck waterproofing, tank lining systems... to name just a few. Our objective is to satisfy your Floorzone needs.

Compact (3mm power floated finish)

Primer: Flowprime @ 0.25l/m²

Scatter: B & E 1.1mm 0.2kg/m²

Slurry: Peran STB Slurry @ 1.6l/m² for 3mm

Topping: Coloured Quartz @ 4.5kg/m²

For a smooth power floated finish

Sealer: Peran STB Seal coat @ 6m²/l

For a textured non-power floated finish

Sealer: Peran STB Seal coat @ 2m²/l

For an optional Matt finish (additional coat)

Sealer: Flowcrete Super satin @ 0.1 kg/m²
(Will slightly reduce surface texture)

Detailed application instructions are available upon request.

Health & Safety

Some of the components of this product may be hazardous during mixing and application. Please consult the relevant Health & Safety Data Sheet available from Flowcrete on request and sent with every delivery.

Important Note

Flowcrete's products are guaranteed against defective materials and the finished product.

Technical Information

The figures that follow are typical properties achieved in laboratory tests at 20 °C and at 50% Relative Humidity.

Fire Resistance:	Class G Certificate No. 1721/75 SITAC
Slip Resistance:	Method described in BS 7976-2 (typical values for 4-S rubber slider) Dry 59 Wet 35 (40 if size 5 Quartz)
Impact Resistance:	ISO6272 1kg weight >1.8m 2kg weight >1.5m
Abrasion Resistance:	BS 8204: Part 2 :2002 Class AR2- medium duty industrial and commercial
Thermal Resistance:	Tolerant of sustained temperatures of 50°C
Water Permeability:	Nil – Karsten test. (impermeable)
Vapour Permeability:	ASTM E96:90 1.36g/m ² /mm/24hrs
Chemical Resistance:	Go to www.flowcrete.com Good resistance to tea, coffee, cola, fruit juice, soaps & bleach >40 N/mm ² (BS 6319)
Compressive Strength:	
Flexural Strength:	15 N/mm ² (BS 6319)
Tensile Strength:	10 N/mm ² (BS 6319)
Bond Strength:	Greater than cohesive of 25 N/mm ² concrete >1.5mPa

Speed of Cure

	10°C	20°C	30°C
Light traffic	36hrs	18hrs	12hrs
Full traffic	72hrs	24hrs	24hrs
Full chemical cure	12 days	7 days	7 days

Aftercare - Cleaning and Maintenance

Clean regularly using a single or double headed rotary scrubber drier in conjunction with a mildly alkaline detergent.

Flowcrete SA (Pty) Ltd
176 Voortrekker Street
Jacobs
Durban
Kwa Zulu Natal
Tel: +27 31 461 3411
Fax: +27 31 461 3475

Flowcrete SA (Pty) Ltd
47 Forge Road
Spartan
Gauteng
Tel: +27 11 394 1980
Fax: +27 11 394 3003

Flowcrete SA (Pty) Ltd
1A Gabriel place
Cnr Gabriel & Main Road
Plumstead
Cape Town
Tel: +27 21 797 0214
Fax: +27 21 761 6664

Email: southafrica@flowcrete.com
Flowcrete SA (Pty) Ltd is a subsidiary of Flowcrete Group plc

www.flowcrete.com