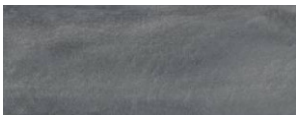


Metallic Expressions



Standard Color Chart



Manatee



Guava



Azure



Carribean



Palm



Margarita



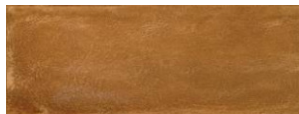
Sangria



Mango



Coral



Rum



Shipwreck



Sunset

Description

Metallic Expressions is a decorative, hard wearing, chemical resistant, advanced polyurea technology providing a unique and versatile metallic floor finish.

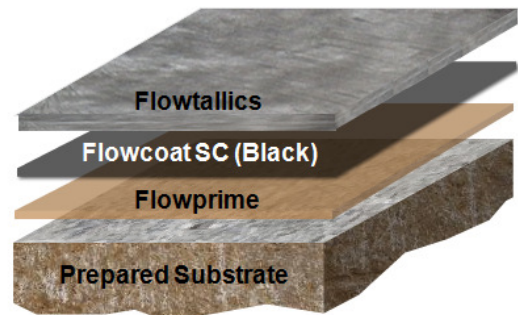
Uses

Used ideally in commercial applications, retail shops and showrooms, designer outlets, department stores, restaurants, reception halls and exhibition areas, casinos, trendy bars and cafes, night clubs, museums and art galleries.

Benefits

- Attractive metallic special floor finish effects
- Versatile design potential
- Chemical resistant
- Hard wearing
- Abrasion resistant
- 100% Solids, low odor
- Seamless and hygienic finish
- Low maintenance
- UV stable version available

System Design



The applied colour effect may differ slightly from the examples shown above. Contact our customer services for a true colour sample or a special colour match. Additional colours are available upon request.

Model Specification

Product: Metallic Expressions
Finish: Gloss
Thickness: Dependant on specification
Manufacturer: Flowcrete SA (Pty) Ltd
Telephone : Customer Service +27(0)31 461 3411

Preparatory work and application in accordance with supplier's instructions.

Substrate Requirements

Concrete or screed substrate should be a minimum of 25 N/mm², free from laitance, dust and other contamination. The substrate should be dry to 75% RH as per BS 8024 requirements and free from rising dampness and ground water pressure.

Products Included in this System

Flowprime (optional)
Flowcoat SF41 (Charcoal)
Metallic Expressions
Metallic Expressions Spray

For actual coverage rates, refer to the appropriate project specification

Installation Service

The installation should be carried out by a Flowcrete approved applicator with a documented quality assurance scheme. Obtain details of our approved applicators by contacting our customer service team or enquiring via our web site www.flowcretesa.co.za

Environmental Considerations

The finished system is assessed as non-hazardous to health and the environment. The long service life and seamless surface reduce the need for repairs, maintenance and cleaning. Environmental and health considerations are controlled during manufacture and application of the products by Flowcrete staff and fully trained and experienced applicators.

Aftercare - Cleaning and Maintenance

Clean regularly using a single or double headed rotary scrubber drier in conjunction with a mildly alkaline detergent.

Important Note - Warranty

Flowcrete's products are guaranteed against defective materials and manufacture and are sold subject to our standard Warranty, Terms and Conditions of Sale, copies of which can be obtained on request. Warranty does not cover suitability, fit for purpose or any consequential or related damages. Please review warranty in detail before using products.

Technical Information

The figures that follow are typical properties achieved in laboratory tests at 20°C and at 50% Relative Humidity.

Fire Resistance BS 476:Part 7:
Surface spread of flame: Class 1

Slip Resistance* TRRL Pendulum Slip Test
Dry > 40, Wet dependent on specification

Abrasion Resistance 5mg loss per 1000 cycles
(1 kg load using CS17 wheels)

Thermal Resistance Tolerant up to 70°C

Water Permeability Nil – Karsten test (impermeable)

Surface Hardness 180 secs. Koenig Hardness Test

Chemical Resistance Contact Flowcrete Technical for chemical resistance chart

Bond Strength Greater than cohesive strength of 25 N/mm² concrete, > 1.5 N/mm².

Speed of Cure

	20°C
Light traffic	3 hrs
Full traffic	24 hrs
Full chemical cure	7days

Note*: Textured systems are recommended to meet slip resistance value requirement for wet conditions and /or other issues associated with surface contaminants – please contact our Technical Advisors for further details and specification.

Further Information

If you would like additional information please consult our Technical Advisory Team at the number listed below or visit our website to register your interest in specifying a Flowcrete flooring system.

Flowcrete SA (Pty) Ltd (2003/029560/07)
176 Voortrekker Street Jacobs Durban 4052
Tel: +27 31 461 3411 Fax: +27 31 461 3475
47 Forge Road Spartan Kempton Park Johannesburg 1619
Tel: +27 11 394 1980 Fax: +27 11 394 3003
Unit 5 55 Manhattan Street Boquinar Industrial Area Matroosfontein Cape Town 7490
Tel: +27 21 385 0653 Fax: 0865 83 8358
Email: southafrica@flowcrete.com

www.flowcretesa.co.za